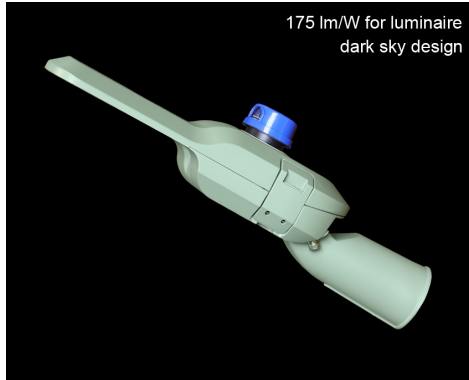


# SZG513 series of led street light with dark sky



## Applications:

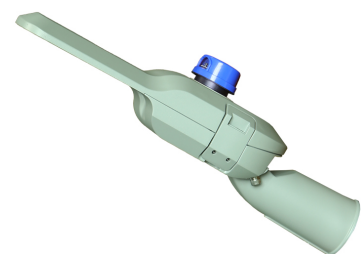
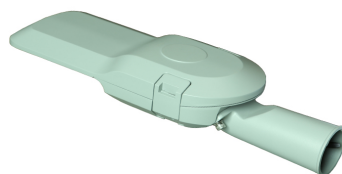
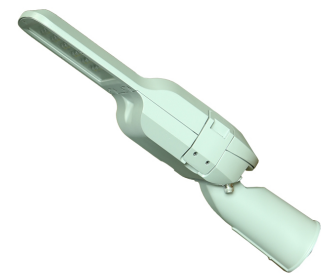
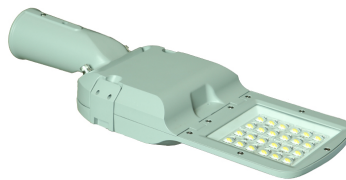
- expressway roads
- urban main roads, secondary roads
- economic development zone and high-tech park road
- industrial and mining plant road
- tourist attractions
- resort road
- park, parking roads

*Note: It can be with 2.4G Mesh slave controller and gateway to form 2.4G Mesh ADHOC wireless lighting control system.*

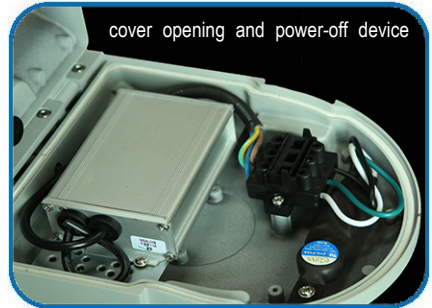
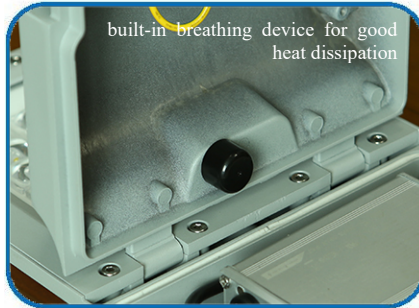
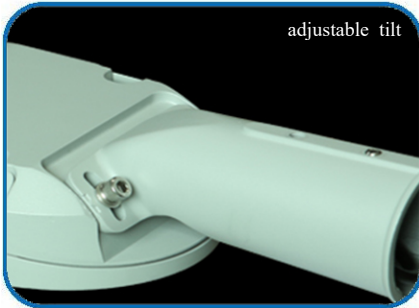
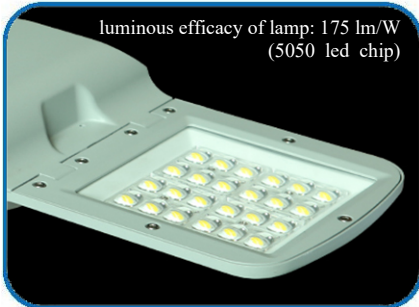
## Description of performances:

brand of led chip	luminous efficacy of led chip	luminous efficacy of luminaire	streamline shell	brand of led driver	power factor
PHILIPS	230 lm/W(5050 chips)	175 lm/W(5050)	streamline shell without dust accumulation	Inventronics /Trismart Lighting	≥0.95
total harmonic distortion	surge lightning protection	opening mode of power cover	dark sky requirement	adjustable angle	light sensor
≤10%	6000 V	quick flip opening for easy maintenance	yes	tilt adjustable	NEMA light sensor optional

## Product profiles:

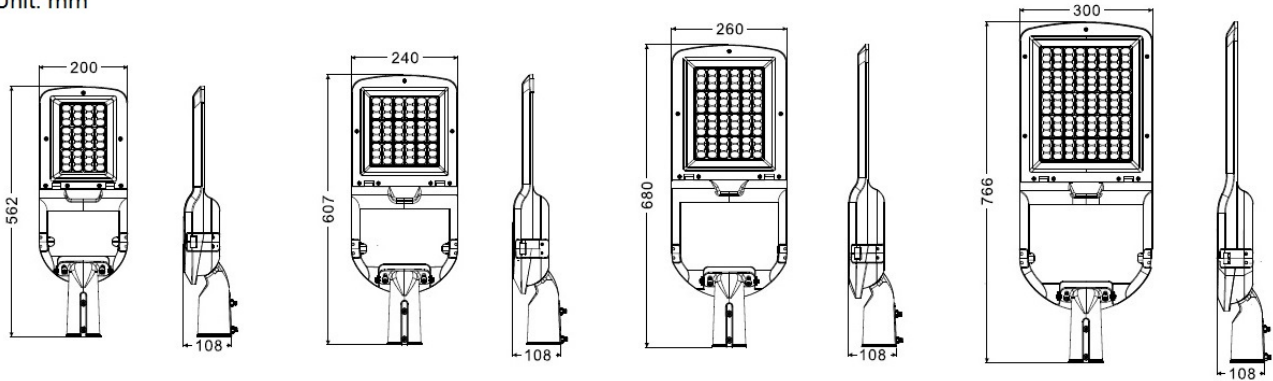


### Product details:

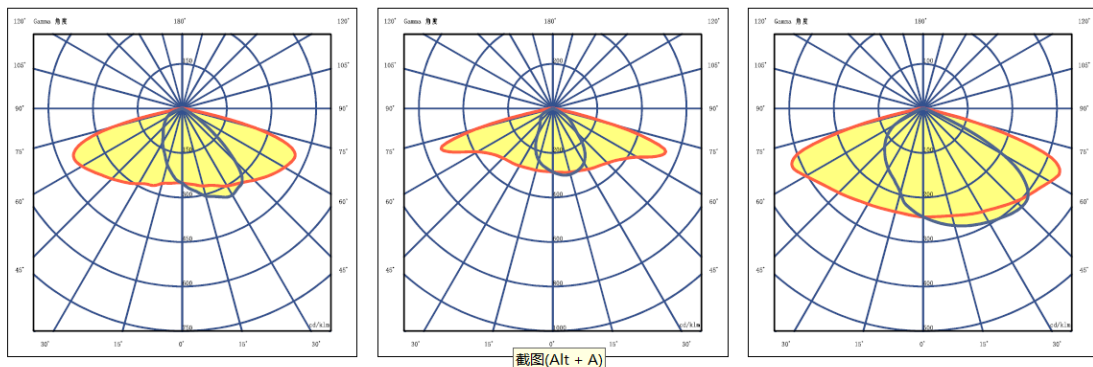


### Dimensions of products:

Unit: mm



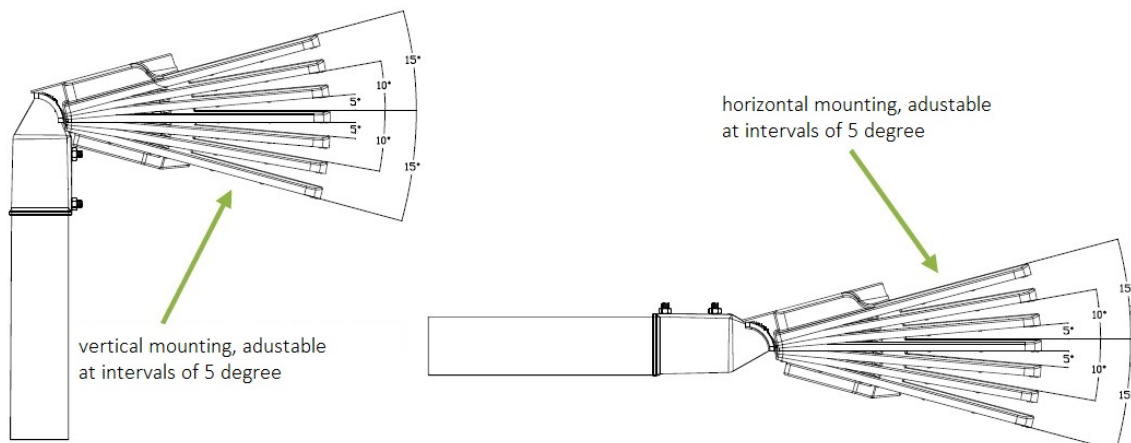
### Light distribution curve:



## Technical parameters:

Parameter items	75W	120W	180W	250W
Input voltage (V)	90-305Vac	90-305Vac	90-305Vac	90-305Vac
Power efficiency	≥91%	≥91%	≥91%	≥91%
Power factor	≥0.95	≥0.95	≥0.95	≥0.95
Surge lightning protection (V)	6000	6000	6000	6000
Total harmonic distortion	≤10%	≤10%	≤10%	≤10%
Brand of led chip	Philips	Philips	Philips	Philips
Luminous efficiency for 5050 led (lm/W)	230	230	230	230
Total luminous flux for 5050 led (lm)	17000±5%	27000±5%	41000±5%	55000±5%
Light efficacy for 5050 luminaire (lm/W)	175	175	175	175
Correlated color temperature (K)	3000-6500	3000-6500	3000-6500	3000-6500
Color rendering index (Ra)	≥75	≥75	≥75	≥75
Beam angle (°)	150° *50°	150° *50°	150° *50°	150° *50°
LED lifespan (h)	100,000	100,000	100,000	100,000
Working temperature (°C)	-40~+55°C	-40~+55°C	-40~+55°C	-40~+55°C
IP protection	IP66	IP66	IP66	IP66
IK protection	IK08	IK08	IK08	IK08
Brand of led driver	Inventronics/Trismart	Inventronics/Trismart	Inventronics/Trismart	Inventronics/Trismart
Installation mode of led driver	built-in	built-in	built-in	built-in
NEMA light sensor	optional	Optional	Optional	optional
Cover opening and power-off device	optional	Optional	Optional	optional
Dimensions (mm)	562*200*108	607*240*108	680*260*108	766*300*108
Weight (Kg)	3.5	4.5	5.5	7.0
Installation of pipe diameter (mm)	Φ60/Φ50	Φ60	Φ60	Φ60
Warranty	5 year	5 year	5 year	5 year

## Product mounting and tilt adjustment:



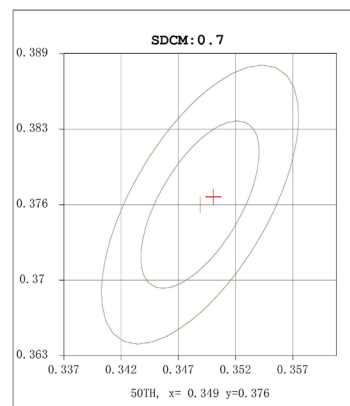
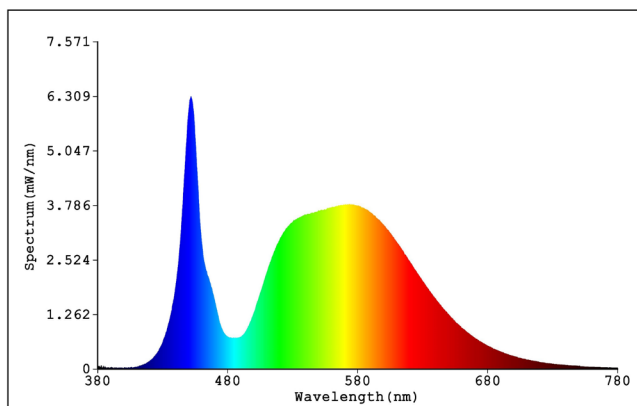


## Test report of luminous efficiency of 5050 led chip:



Test report  
EVERFINE LEDspec Test Report

### Spectrum Test Report



#### Color Parameters:

Chromaticity Coordinate (2Deg):  $x=0.3505$   $y=0.3770$  /  $u'=0.2055$   $v'=0.4973$   $duv=1.013e$   
 $Tc=4900K$  Dominant WL:  $Ld=567.6nm$  Purity=18.3%  
 Ratio: R=13.7% G=83.3% B=3.0% Peak WL:  $Lp=451.9nm$  HWL: 15.4nm  
 Render Index:  $Ra=70.8$  AvgR=58.7 Kred=8.29%  
 $R1 = 65.92$   $R2 = 76.64$   $R3 = 85.35$   $R4 = 69.25$   $R5 = 66.09$   
 $R6 = 67.59$   $R7 = 83.35$   $R8 = 51.86$   $R9 = -44.77$   $R10 = 44.83$   
 $R11 = 64.47$   $R12 = 32.03$   $R13 = 68.03$   $R14 = 91.86$   $R15 = 58.30$   
 TM30 Parameters:  $Rf = 75.1$ ,  $Rg: 90.0$   
 TLCI Parameters: TLCI-2012 = 47

#### Photo Parameters:

Flux = 228.2 lm Eff. : 234.26 lm/W  $Fe = 642.3 mW$  Eff.=65.932%  
 $e=2.953e+000 \mu mol/s$  blue ratio=3.44 fluo. eff.=5.108e-001  
 Photosynthetic (400-700nm): PPF: 2.8969  $\mu mol/s$   
 PRF: 632.77mW  
 Eff (PPF): 2.97  $\mu mol/s/W$   
 EQE (%): 632.90

#### Electrical parameters:

VF = 21.64 V IF = 45.01 mA P = 974.1 mW Ch1  
 LEVEL: \*0 [OUT] WHITE: 5000K