

SZG503A series of led street light



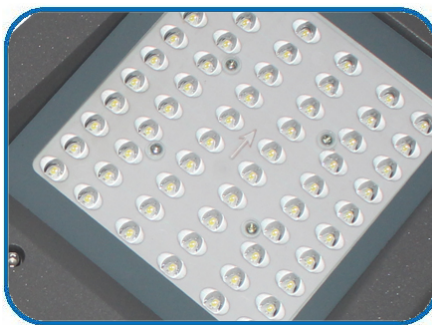
Applications:

- Urban main roads and secondary trunk roads and auxiliary street lamps
- county, township and town roads
- high-tech park street lamp
- economic development zone
- factory street lamps
- park, parking roads
- residential district road

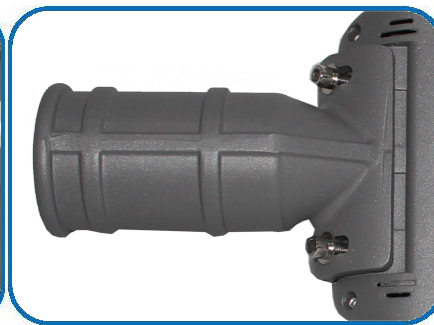
Description of performances:

brand of led chip	luminous efficacy of led chip	light efficacy of luminaire	brand of led driver	wide input voltage	power factor
PHILIPS	210 lm/W	155 lm/W	Trismart Lighting	90~305 Vac	≥0.95
total harmonic distortion	surge lightning protection	adjustable angle	opening mode for power cavity	light sensor	material of shell
≤10%	6000 V	adjustable	rear cover opening easy to maintain	NEMA light sensor optional	ADC12 die-casting aluminum

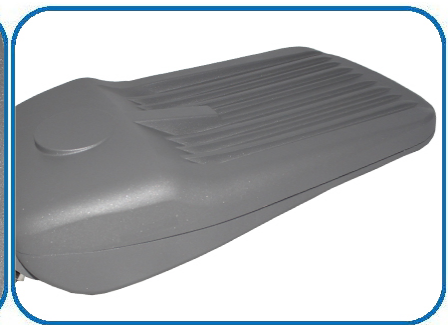
Product details:



Philips super bright led chip/lens



adjustable tile (90° flip)



streamlined shell and radiating rib to reduce dust accumulation

Technical parameters:

Parameter items	50W	100W	150W	200W
Input voltage (V)	90-305Vac	90-305Vac	90-305Vac	90-305Vac
Power efficiency	≥91%	≥91%	≥91%	≥91%
Power factor	≥0.95	≥0.95	≥0.95	≥0.95
Surge lightning protection (V)	6000	6000	6000	6000
Total harmonic distortion	≤10%	≤10%	≤10%	≤10%
Brand of led chip (pcs)	Philips	Philips	Philips	Philips
Luminous efficiency for led (lm/W)	210	210	210	210
Total luminous flux (lm)	10500±5%	21000±5%	31500±5%	42000±5%
Light efficacy for luminaire (lm/W)	155	155	155	155
Correlated color temperature (K)	3000-6500	3000-6500	3000-6500	3000-6500
Color rendering index (Ra)	≥75	≥75	≥75	≥75
Beam angle (°)	140° *70°	140° *70°	140° *70°	140° *70°
LED lifespan (h)	100,000	100,000	100,000	100,000
Working temperature (°C)	-40~+55°C	-40~+55°C	-40~+55°C	-40~+55°C
IP protection	IP66	IP66	IP66	IP66
IK protection	IK08	IK08	IK08	IK08
Led driver	Trismart led driver	Trismart led driver	Trismart led driver	Trismart led driver
Installation mode of led driver	built-in	built-in	built-in	built-in
Opening mode for power cavity	opening rear cover	opening rear cover	opening rear cover	opening rear cover
NEMA light sensor	optional	optional	optional	optional
Dimensions (mm)	485*210*70	540*240*102	605*278*105	697*312*112
Weight (Kg)	2.5	3.0	4.6	5.5
Installation of pipe diameter (mm)	Φ60	Φ60	Φ60	Φ60
Warranty	3 years	3 years	3 years	3 years

Test report of luminous efficiency of led chip:

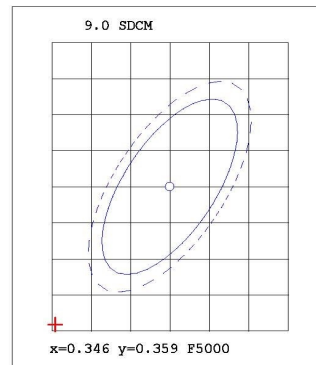
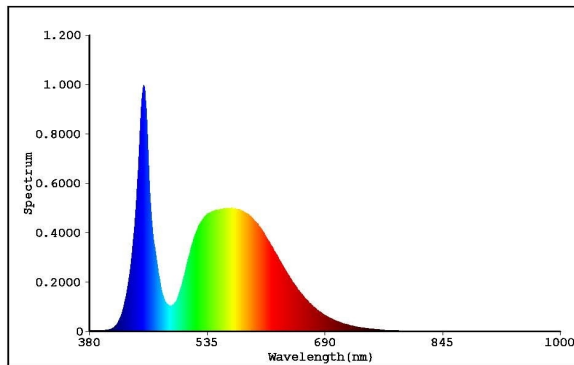
EVERFINE 远方

Test report

EVERFINE LEDspec Test Report

2 Of 4

Spectrum Test Report



Color Parameters:

Chromaticity Coordinate(2Deg): $x=0.3314$ $y=0.3399$ / $u'=0.2066$ $v'=0.4768$ $duv=-1.324e-004$

$T_c=5545K$ Dominant WL:Ld=536.9nm Purity=1.5%

Ratio:R=14.1% G=82.3% B=3.7% Peak WL:Lp=451.4nm HWL:19.7nm

Render Index:Ra=75.7

R1 =74.64 R2 =79.78 R3 =80.99 R4 =76.68 R5 =74.83

R6 =71.19 R7 =83.59 R8 =63.76 R9 =-11.12 R10=49.49

R11=73.52 R12=44.41 R13=75.32 R14=89.03 R15=71.15

TM30 Parameters: Rf = 72.8, Rg:94.9

Photo Parameters:

Flux = 143.7 lm Eff. : 208.44 lm/W Fe = 440.0 mW

Electrical parameters:

VF = 5.750 V IF = 119.9 mA P = 689.4 mW Ch1

LEVEL:** [OUT] WHITE:ANSI_5700K

Status: T=140.00ms Ip=47130 (72%) [HAAS1200_V1_USB] V2.00.288

Model:120MA
 Tester:D.U.01.0151 24V
 Temperature:25.3Deg
 Manufactory:EVERFINE
 Assessor:damin
 System:WY + HAAS1200_V1_USB

Number:3
 Date:2021-06-05 16-40
 Humidity:65.0%
 Remarks:---