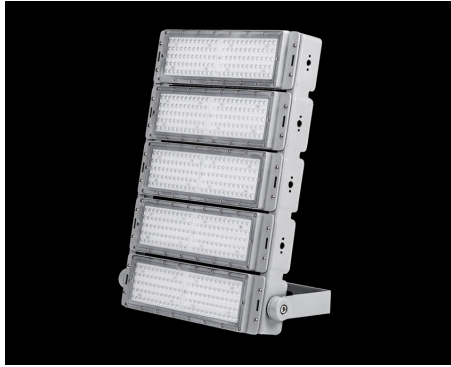


SZG312 series of high power led floodlight



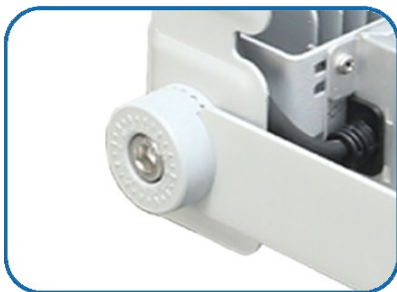
Applications:

- industrial and mining enterprises large-scale plant, workshop, warehouse, equipment room, etc.
- high pole lights: highway overpasses, urban road junctions, port terminal freight yards, highway service areas, oil depots and oil tanks, railway freight forwarders, lamp bridges and lighthouses, etc.
- city square, enterprise square
- large parking lot
- indoor and outdoor sports venues
- driving, shore crane, gantry crane, etc.

Description of performances:

brand of led chip	luminous efficiency for led	light efficacy for luminaire	led driver	wide voltage input	power efficiency
PHILIPS	210 lm/W	160 lm/W	Inventronics Trismart Lighting	90~305 Vac	≥91%
power factor	surge lightning protection	total harmonic distortion	beam angle	shell material	IP protection
≥0.95	6000 V	≤10%	30°/60°/90° /145°*70°	ADC12 die-cast aluminum	IP66

Product details:



Dial for adjusting bracket



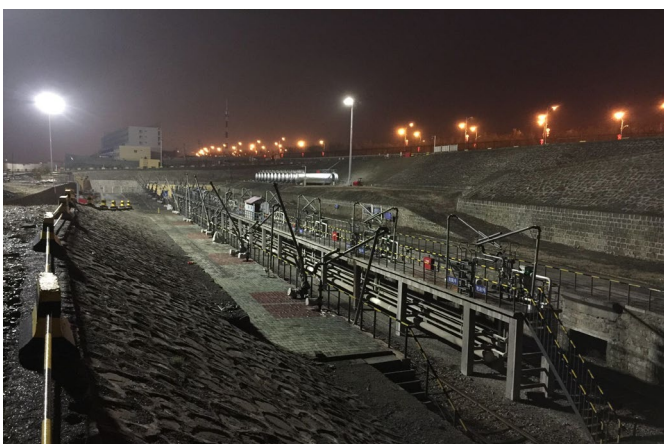
ADC12 die-cast aluminum heat dissipation module



Meanwell led driver

Technical parameters:

Parameter items	100W	200W	300W	400W	500W	600W
Input voltage (V)	90-305Vac	90-305Vac	90-305Vac	90-305Vac	90-305Vac	90-305Vac
Power efficiency	≥91%	≥91%	≥91%	≥91%	≥91%	≥91%
Power factor	≥0.95	≥0.95	≥0.95	≥0.95	≥0.95	≥0.95
Surge lightning protection (V)	6000	6000	6000	6000	6000	6000
Total harmonic distortion	≤10%	≤10%	≤10%	≤10%	≤10%	≤10%
Brand of led chip	Philips	Philips	Philips	Philips	Philips	Philips
Quantity of led chip (pcs)	120	240	360	480	600	720
Luminous efficiency for led (lm/W)	210	210	210	210	210	210
Total luminous flux (lm)	20000±5%	40000±5%	60000±5%	80000±5%	100000±5%	120000±5%
Light efficiency for luminaire (lm/W)	160	160	160	160	160	160
Correlated color temperature (K)	3000-6500	3000-6500	3000-6500	3000-6500	3000-6500	3000-6500
Color rendering index (Ra)	≥75	≥75	≥75	≥75	≥75	≥75
Beam angle (°)	30°/60°/90°/145°*70°	30°/60°/90°/145°*70°	30°/60°/90°/145°*70°	30°/60°/90°/145°*70°	30°/60°/90°/145°*70°	30°/60°/90°/145°*70°
LED lifespan (h)	100,000	100,000	100,000	100,000	100,000	100,000
Brand of led driver	Inventronics/Trismart	Inventronics/Trismart	Inventronics/Trismart	Inventronics/Trismart	Inventronics/Trismart	Inventronics/Trismart
Installation mode of led driver	external	external	external	external	external	external
Working temperature (°C)	-40~+50°C	-40~+50°C	-40~+50°C	-40~+50°C	-40~+50°C	-40~+50°C
IP protection	IP66	IP66	IP66	IP66	IP66	IP66
Quantity of modular (Pcs)	1	2	3	4	5	6
Dimensions (mm)	400*100*180	400*205*180	400*305*180	400*405*180	400*505*180	400*605*180
Weight (Kg)	3.0	4.0	5.0	6.0	7.0	8.0
Mounting mode	U-bracket	U-bracket	U-bracket	U-bracket	U-bracket	U-bracket
Warranty	5 years	5 years	5 years	5 years	5 years	5 years



Test report of luminous efficiency of led chip:

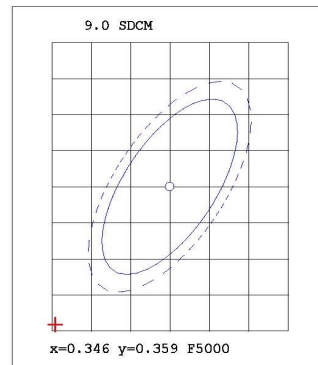
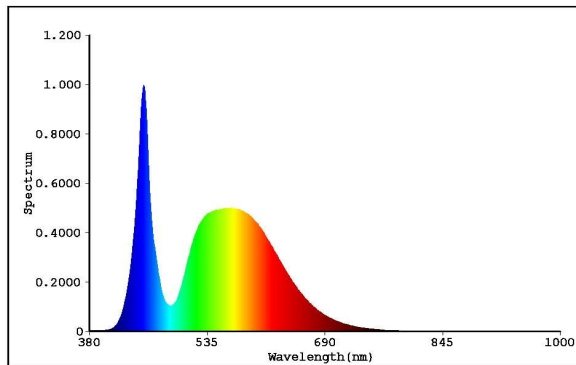
EVERFINE 远方

Test report

EVERFINE LEDspec Test Report

2 Of 4

Spectrum Test Report



Color Parameters:

Chromaticity Coordinate(2Deg): $x=0.3314$ $y=0.3399$ / $u'=0.2066$ $v'=0.4768$ $duv=-1.324e-004$

Tc=5545K Dominant WL:Ld=536.9nm Purity=1.5%

Ratio:R=14.1% G=82.3% B=3.7% Peak WL:Lp=451.4nm HWL:19.7nm

Render Index:Ra=75.7

R1 =74.64 R2 =79.78 R3 =80.99 R4 =76.68 R5 =74.83

R6 =71.19 R7 =83.59 R8 =63.76 R9 =-11.12 R10=49.49

R11=73.52 R12=44.41 R13=75.32 R14=89.03 R15=71.15

TM30 Parameters: Rf = 72.8, Rg:94.9

Photo Parameters:

Flux = 143.7 lm Eff. : 208.44 lm/W Fe = 440.0 mW

Electrical parameters:

VF = 5.750 V IF = 119.9 mA P = 689.4 mW Ch1

LEVEL:** [OUT] WHITE:ANSI_5700K

Status: T=140.00ms Ip=47130 (72%) [HAAS1200_V1_USB] V2.00.288

Model:120MA
 Tester:D.U.01.0151 24V
 Temperature:25.3Deg
 Manufactory:EVERFINE
 Assessor:damin
 System:WY + HAAS1200_V1_USB

Number:3
 Date:2021-06-05 16-40
 Humidity:65.0%
 Remarks:---