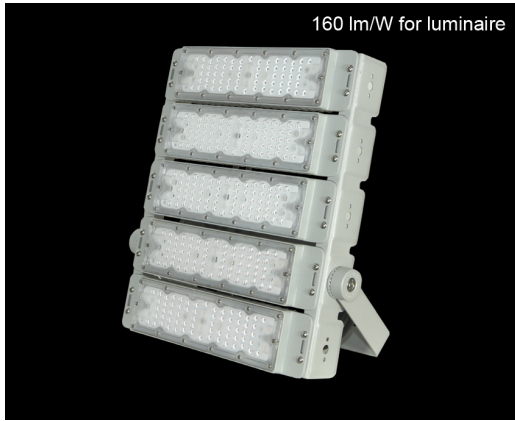


SZG301 series of modular led floodlight



Applications:

- industrial and mining enterprises large-scale plant, workshop, warehouse, equipment room, etc.
- high pole lights: highway overpasses, urban road junctions, port terminal freight yards, highway service areas, oil depots and oil tanks, railway freight forwarders, lamp bridges and lighthouses, etc.
- city square, enterprise square
- large parking lot
- indoor and outdoor sports venues
- driving, shore crane, gantry crane, etc.

Description of performances:

| | | | | | |
|-------------------|-----------------------------|------------------------------|-----------------------------------|-------------------------|------------------|
| brand of led chip | luminous efficiency for led | light efficacy for luminaire | brand of led driver | wide voltage input | power efficiency |
| PHILIPS | 210 lm/W | 160 lm/W | Inventronics Trismart Lighting | 90~305 Vac | ≥91% |
| power factor | surge lightning protection | total harmonic distortion | beam angle | shell material | IP protection |
| ≥0.95 | 6000 V | ≤10% | 30°/60°/90° /145°*70° | ADC12 die-cast aluminum | IP66 |

Product details:



Dial for adjusting bracket



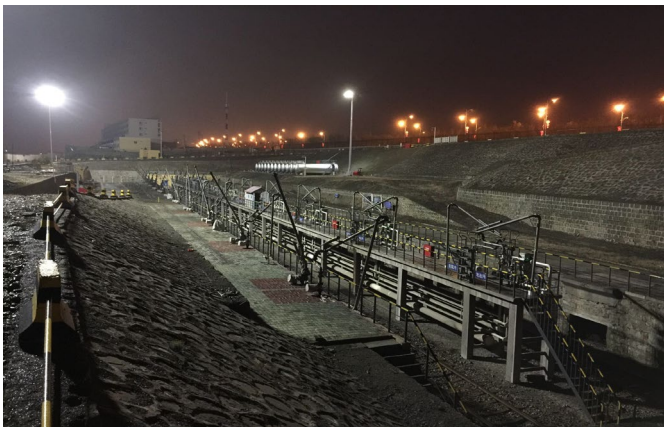
ADC12 die-cast aluminum heat dissipation module



Meanwell led driver

Technical parameters:

| Parameter items | 50W | 100W | 150W | 200W | 250W | 300W | 400W | 500W |
|--|--------------------------|--------------------------|--------------------------|--------------------------|--------------------------|--------------------------|--------------------------|--------------------------|
| Input voltage (V) | 90-305Vac | 90-305Vac | 90-305Vac | 90-305Vac | 90-305Vac | 90-305Vac | 90-305Vac | 90-305Vac |
| Power efficiency | ≥91% | ≥91% | ≥91% | ≥91% | ≥91% | ≥91% | ≥91% | ≥91% |
| Power factor | ≥0.95 | ≥0.95 | ≥0.95 | ≥0.95 | ≥0.95 | ≥0.95 | ≥0.95 | ≥0.95 |
| Surge lightning protection (V) | 6000 | 6000 | 6000 | 6000 | 6000 | 6000 | 6000 | 6000 |
| Total harmonic distortion | ≤10% | ≤10% | ≤10% | ≤10% | ≤10% | ≤10% | ≤10% | ≤10% |
| Brand of led chip | Philips | Philips | Philips | Philips | Philips | Philips | Philips | Philips |
| Quantity of led chip (pcs) | 64 | 128 | 192 | 256 | 320 | 384 | 512 | 640 |
| Luminous efficiency for led (lm/W) | 210 | 210 | 210 | 210 | 210 | 210 | 210 | 210 |
| Total luminous flux (lm) | 10500±5% | 21000±5% | 31500±5% | 42000±5% | 52500±5% | 63000±5% | 84000±5% | 105000±5% |
| Light efficiency for luminaire (lm/AW) | 160 | 160 | 160 | 160 | 160 | 160 | 160 | 160 |
| Correlated color temperature (K) | 3000-6500 | 3000-6500 | 3000-6500 | 3000-6500 | 3000-6500 | 3000-6500 | 3000-6500 | 3000-6500 |
| Color rendering index (Ra) | 75 | 75 | 75 | 75 | 75 | 75 | 75 | 75 |
| Beam angle (°) | 30°/60°/90° /145°*70° | 30°/60°/90° /145°*70° | 30°/60°/90° /145°*70° | 30°/60°/90° /145°*70° | 30°/60°/90° /145°*70° | 30°/60°/90° /145°*70° | 30°/60°/90° /145°*70° | 30°/60°/90° /145°*70° |
| LED lifespan (h) | 100,000 | 100,000 | 100,000 | 100,000 | 100,000 | 100,000 | 100,000 | 100,000 |
| Working temperature (°C) | -40~+50°C | -40~+50°C | -40~+50°C | -40~+50°C | -40~+50°C | -40~+50°C | -40~+50°C | -40~+50°C |
| IP protection | IP66 | IP66 | IP66 | IP66 | IP66 | IP66 | IP66 | IP66 |
| Quantity of modular (Pcs) | 1 | 2 | 3 | 4 | 5 | 6 | 8 | 10 |
| Brand of led driver | Inventronics | Inventronics | Inventronics | Inventronics | Inventronics | Inventronics | Inventronics | Inventronics |
| Installation mode of led driver | external | external | external | external | external | external | external | external |
| Dimensions (mm) | 170*350*160 | 250*350*160 | 340*350*160 | 410*350*160 | 485*350*160 | 575*350*160 | 665*370*160 | 665*455*160 |
| Weight (Kg) | 2.8 | 3.8 | 4.8 | 5.8 | 6.8 | 7.8 | 11.5 | 13.5 |
| Mounting mode | U-bracket | U-bracket | U-bracket | U-bracket | U-bracket | U-bracket | U-bracket | U-bracket |
| Warranty | 5 years | 5 years | 5 years | 5 years | 5 years | 5 years | 5 years | 5 years |



Test report of luminous efficiency of led chip:

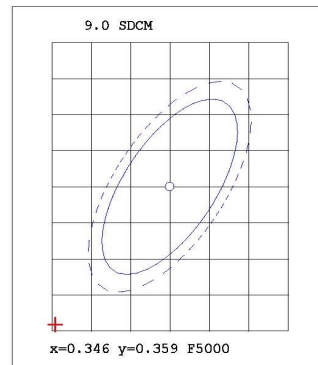
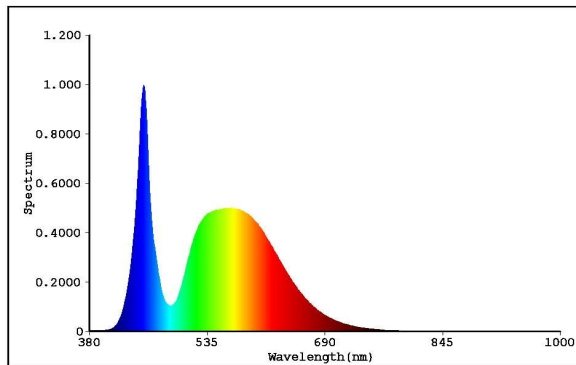
EVERFINE 远方

Test report

EVERFINE LEDspec Test Report

2 Of 4

Spectrum Test Report



Color Parameters:

Chromaticity Coordinate(2Deg): $x=0.3314$ $y=0.3399$ / $u'=0.2066$ $v'=0.4768$ $duv=-1.324e-004$

Tc=5545K Dominant WL:Ld=536.9nm Purity=1.5%

Ratio:R=14.1% G=82.3% B=3.7% Peak WL:Lp=451.4nm HWL:19.7nm

Render Index:Ra=75.7

R1 =74.64 R2 =79.78 R3 =80.99 R4 =76.68 R5 =74.83

R6 =71.19 R7 =83.59 R8 =63.76 R9 =-11.12 R10=49.49

R11=73.52 R12=44.41 R13=75.32 R14=89.03 R15=71.15

TM30 Parameters: Rf = 72.8, Rg:94.9

Photo Parameters:

Flux = 143.7 lm Eff. : 208.44 lm/W Fe = 440.0 mW

Electrical parameters:

VF = 5.750 V IF = 119.9 mA P = 689.4 mW Ch1

LEVEL:** [OUT] WHITE:ANSI_5700K

Status: T=140.00ms Ip=47130 (72%) [HAAS1200_V1_USB] V2.00.288

Model:120MA
 Tester:D.U.01.0151 24V
 Temperature:25.3Deg
 Manufactory:EVERFINE
 Assessor:damin
 System:WY + HAAS1200_V1_USB

Number:3
 Date:2021-06-05 16-40
 Humidity:65.0%
 Remarks:---