

# SZG319 led floodlight



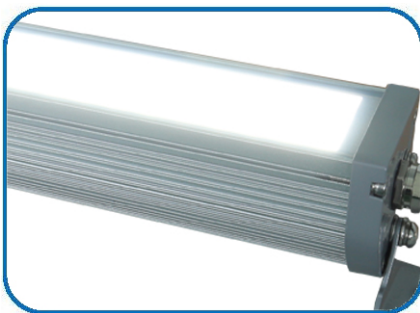
## Applications:

- substation, control room
- production workshop
- equipment room, pump house
- trench, tunnel, roadway, passageway
- warehouse

## Description of performances:

brand of led chip	luminous efficiency for led	mounting bracket	led driver	wide input voltage	power efficiency
Philips	≥200 lm/W	adjustable	Trismart led driver	90~305 Vac	≥90%
power factor	surge lightning protection	total harmonic distortion	beam angle	shell material	IP protection
≥0.95	6000 V	≤10%	120°	6063 aluminum alloy	IP65

## Product details:



anti-glare transparent panel



adjustable mounting bracket



high energy lithium ion battery  
(used for emergency model)

## Technical parameters:

Parameters	12W	24W	36W	48W
Input voltage (V)	90-305V	90-305V	90-305V	90-305V
Luminous efficiency for led (lm/W)	200	200	200	200
Total luminous flux (lm)	2400	4800	7200	9600
Light efficacy for luminaire (lm/W)	155	155	155	155
Correlated color temperature (K)	3000-6500	3000-6500	3000-6500	3000-6500
Color rendering index (Ra)	≥75	≥75	≥75	≥75
Beam angle	120°	120°	120°	120°
LED lifespan (h)	100,000	100,000	100,000	100,000
Normal illumination power (W)	12	24	36	48
Emergency illumination power (W)	/	/	/	/
Emergency illumination time (h)	/	/	/	/
Charging time (h)	/	/	/	/
Battery capacity (Wh)	/	/	/	/
Working temperature (°C)	-40~+50°C	-40~+50°C	-40~+50°C	-40~+50°C
IP protection	IP65	IP65	IP65	IP65
Installation mode of led driver	built-in	built-in	built-in	built-in
Installation mode of battery	/	/	/	/
Dimensions (mm)	285*64*74	385*64*74	500*64*74	683*64*74
Weight (kg)	0.7	1.0	1.5	1.7
Mounting mode	adjustable bracket	adjustable bracket	adjustable bracket	adjustable bracket

**Note:** 24V/36V low voltage lights can be customized.

