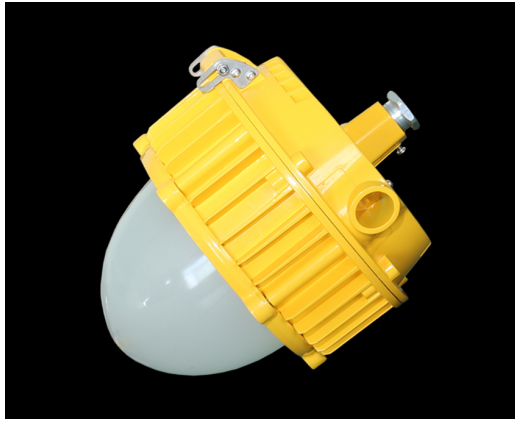


SZG202C led explosionproof platform lamp(emergency)



Applications:

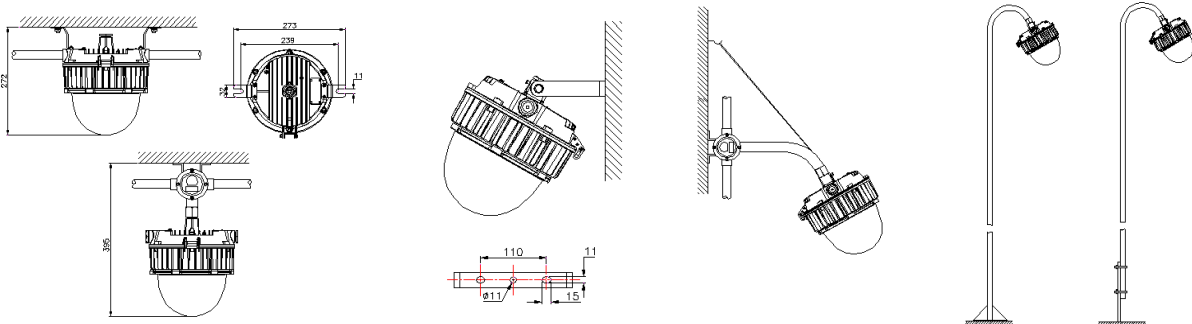
It can be used as both normal illumination and emergency illumination with built-in lithium ion battery.

- petrochemical plant platform
- oilfield drilling platform
- oil depots, gas stations, filling stations
- pharmaceutical chemical, fine chemical, organic chemical and other enterprises explosionproof places
- explosionproof street lamps
- explosionproof tunnel lights
- explosionproof passageway lights

Description of performances:

Explosionproof marking	Hazardous area	Brand of LED	Luminous efficiency for led	Light efficacy for luminaire
ATEX certification II 2 G Ex d IIC T6 Gb	Zone 1 & Zone 2	Philips	200 lm/W	145 lm/W
Emergency mode	Type of battery	Emergency time	Mounting mode	IP protection
illumination emergency	lithium ion battery	≥90 min	G3/4 pipe U-bracket	IP66

Mounting modes and dimensions:



Technical parameters:

Parameter items	55W
Input voltage (V)	90-305Vac
Rated power (W)	55W (normal illumination) /5W (emergency illumination)
Emergency mode	illumination emergency
Emergency time (minute)	≥90
Brand of led chip	Philips
Luminous efficiency for led (lm/W)	200
Light efficiency for luminaire (lm/W)	145
Correlated color temperature (K)	3000-6500
Color rendering index (Ra)	≥75
Beam angle (°)	120°
LED lifespan (h)	100,000
Working temperature (°C)	-20~+40°C
IP protection	IP66
Brand of led driver	Trismart Lighting driver
Installation mode of led driver	built-in
Dimensions (mm)	φ210*255
Weight (Kg)	4
Mounting mode	G3/4 pipe /U-bracket

