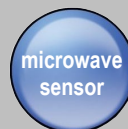




Shenzhen Trismart Lighting Technology Co., Ltd. is a research and development, design, production and sales of private high-tech enterprises. Company's management and technical team has 20 years' experience in the development and design of industrial lightings, professional lightings and lighting engineering systems. The chairman of the company, Dr. Chen, is the member of China Lighting Society, the Deputy Secretary General of the Shenzhen Lighting Appliance Association and a senior expert of Shenzhen Lighting Society. Trismart Lighting is a cooperative supplier of European Union led street lamps, a network supplier of Royal Shell (shell) and a network supplier of large enterprises such as Sinopec, PetroChina, State Grid, Datang Electric Power and Huadian Group.

WWW.SZTRISMART.COM



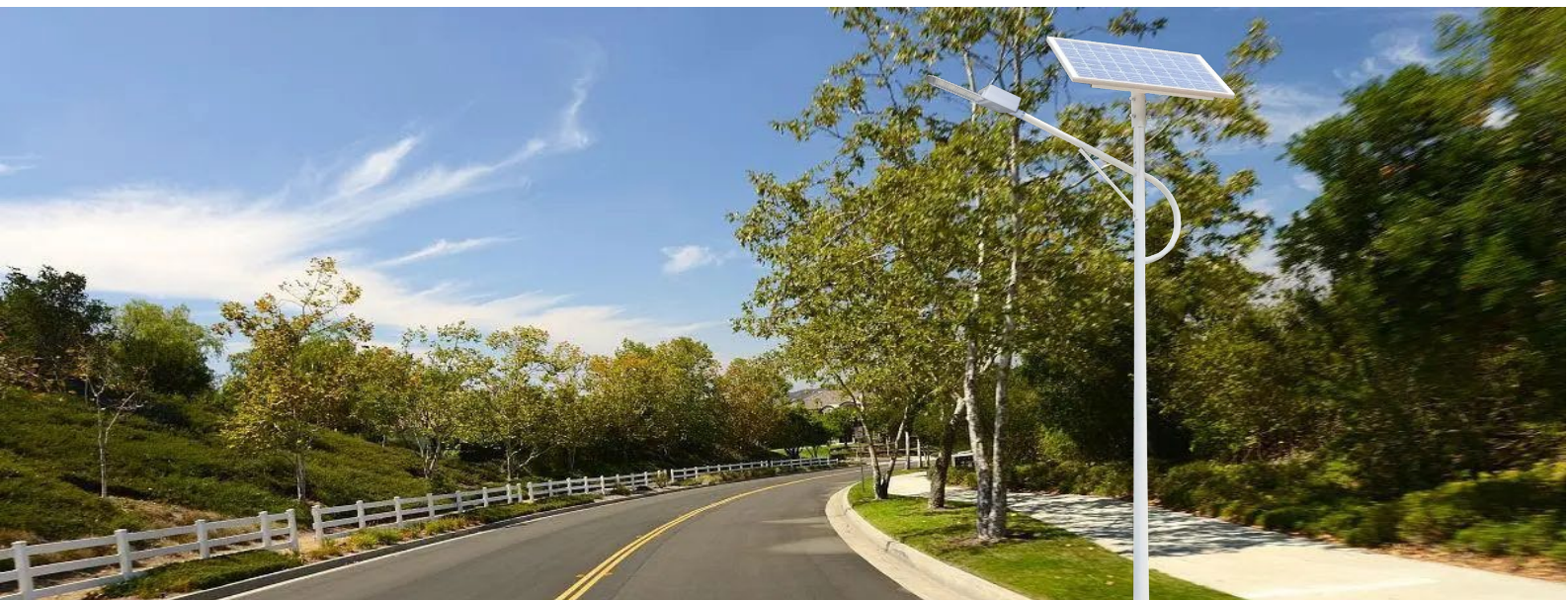
Solar Led Street Light

two in one

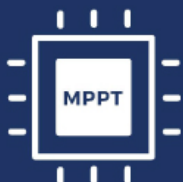


SZG574 two in one solar led street light with **dark sky** is an intelligent solar lighting system with easy to purchase, low shipping costs, quick installation and simple maintenance. The system only consists of two main parts: one is solar panel part including solar panel and bracket, the other is lamp head part including street light, built in lithium phosphate battery, built in solar controller and integrated microwave sensor optional. It meets the requirement of dark sky without any light pollution.

It adopts Philips 3030 led chip with 240 lm/W luminous efficiency which can increase the brightness more than 50%, low temperature powerful lithium iron phosphate battery which can discharge at -25°C reliably, MPPT intelligent solar controller with IPT, and mono solar panels with 23%-24% conversion efficiency.



super brightness



MPPT intelligent solar controller



microwave sensor



Li-battery management system



2.4G remote operation



Li-battery monitor system

Trismart Lighting

Philips

super brightness 3030 led chip



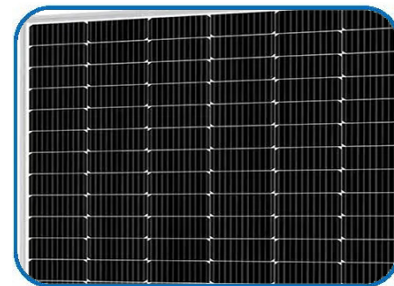
Super brightness Philips 3030 led chip

- **luminous efficiency for led chip: 240 lm/W**
- **light efficacy for luminaire: 200 lm/W**
- **meet the requirement of dark sky**
- The thermal resistance is only 3°C which the heat output is 20% of the rated value and its average service life is up to 100000 hours.
- It can reduce and save more than 30% power of luminaire to reach the same luminance and illumination effect.
- no blue light hazard



High efficiency mono solar panel

- high efficiency mono solar wafers
- solar conversion efficiency: 23%~24%
- wafer specification: 182*182 mm
- lifespan: ≥25 years
- Average attenuation speed: 0.6%
- 25 years maximum output power attenuation: 15%



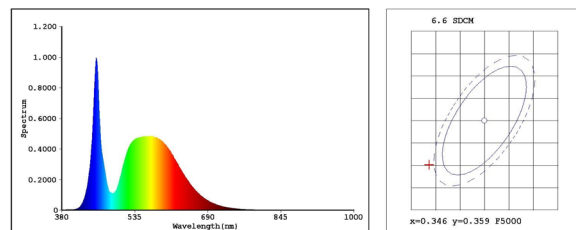
EVERFINE 远方

Test report

EVERFINE LEDSpec Test Report

4 Of 4

Spectrum Test Report



Color Parameters:

Chromaticity Coordinate(2Deg):x=0.3347 y=0.3492/u'=0.2053 v'=0.4819 duv=3.134e-003
Tc=5410K Dominant WL:Ld=558.0nm Purity=5.2%
Ratio:R=14.0% G=82.2% B=3.8% Peak WL:Lp=453.1nm HWL:17.2nm
Render Index:Ra=75.9
R1 =73.76 R2 =81.05 R3 =84.21 R4 =75.46 R5 =73.73
R6 =72.76 R7 =84.81 R8 =61.67 R9 =-15.45 R10=52.76
R11=71.59 R12=42.32 R13=75.35 R14=90.99 R15=69.42
TM30 Parameters: Rf = 74.3, Rg:93.3

Photo Parameters:

Flux = 50.96 lm Eff. : 241.29 lm/W Fe = 153.5 mW

Electrical parameters:

VF = 5.294 V IF = 39.90 mA P = 211.2 mW Ch1

LEVEL:**[OUT] WHITE:ANSI_5700K

Status: T=201.00ms Ip=26653 (41%) [HAAS1200_V1_USB] V2.00.288



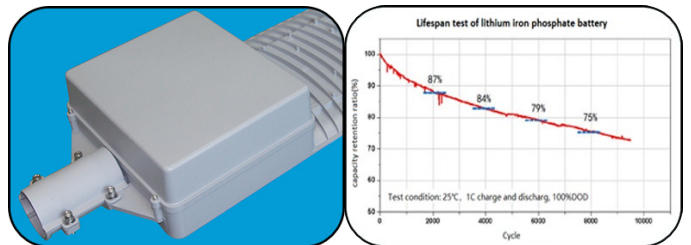
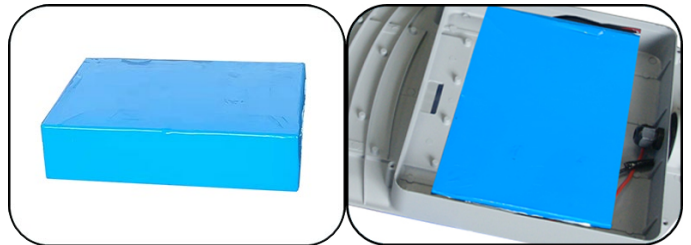
Trismart Lighting

Low temperature powerful lithium iron phosphate battery(-25°C)



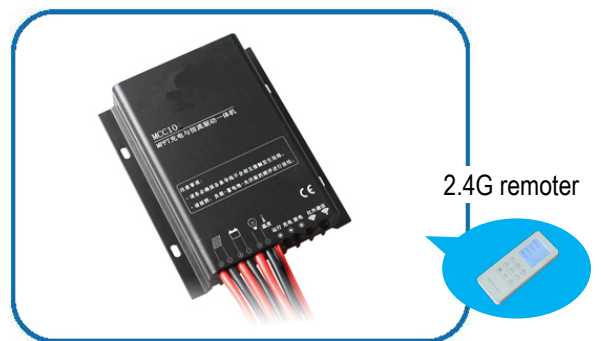
Low temperature powerful lithium iron phosphate battery

- Adopt low temperature powerful lithium iron phosphate battery which can discharge at -25°C reliably.
- Cycle life: ≥3000 cycles for more than 8 years' lifespan
- Cell capacity: 6000mAh
- Less than 3mΩ internal resistance can reduce internal energy loss and offer higher current discharge.
- High temperature discharge efficiency: ≥95%
- Low temperature discharge efficiency: ≥70%
- free of cobalt and other heavy metals
- no fire, no explosion, absolutely safe and reliable
- **Large battery cavity, battery pack built in the lamp head, beautiful coordination and easy maintenance.**



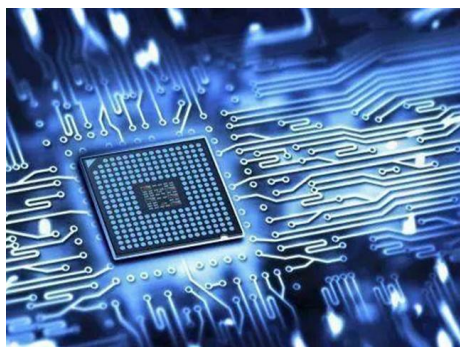
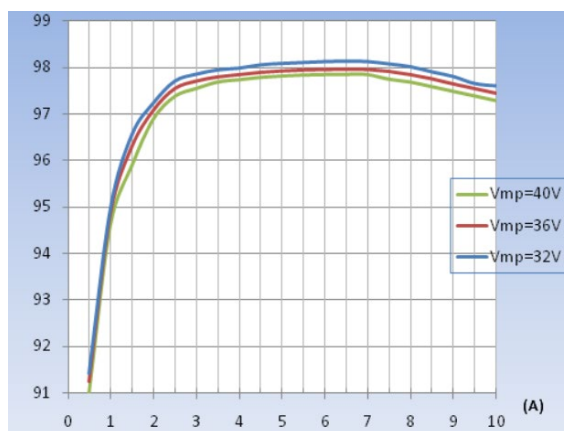
Intelligent solar controller

- Adopting MPPT technology to track the maximum power of solar panel
- MPPT efficiency: ≥99.9%
- Charge conversion efficiency: ≥98.5% (MPPT)
- Constant current drive efficiency: ≥96% (MPPT)
- IPT(intelligent power technology) can adjust the optimal power according to the weather conditions of the next 7 days and the remaining energy of the battery pack to ensure 365 days' lighting every day.
- Control mode: light control, time control, induction control
- 2.4G remoter optional
- **Solar controller is built in the shell of lamp.**



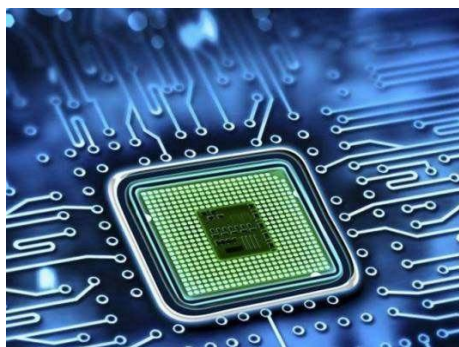
Trismart Lighting

MPPT intelligent solar controller



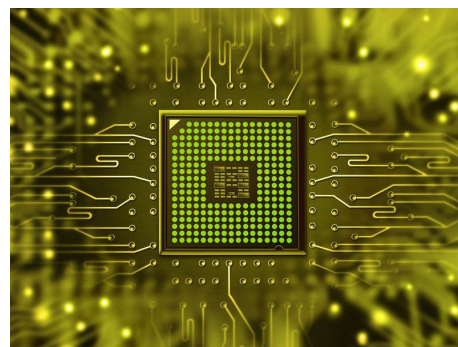
Intelligent power technology

According to the weather conditions of the next 7 days and the remaining energy of the battery, the power of the light can be adjusted to the optimal value through automatic calculation and scientific evaluation under the premise of ensuring the illumination to meet lighting for 365 days and extend cycle life of battery.



Single Monitoring and balanced charging Technology :

Through monitoring the voltage and current of the single cell in real time and optimizing the calculation, solar controller outputs the optimal charging voltage and current to reach the balanced charging for each cell which will prolong lifespan of battery.

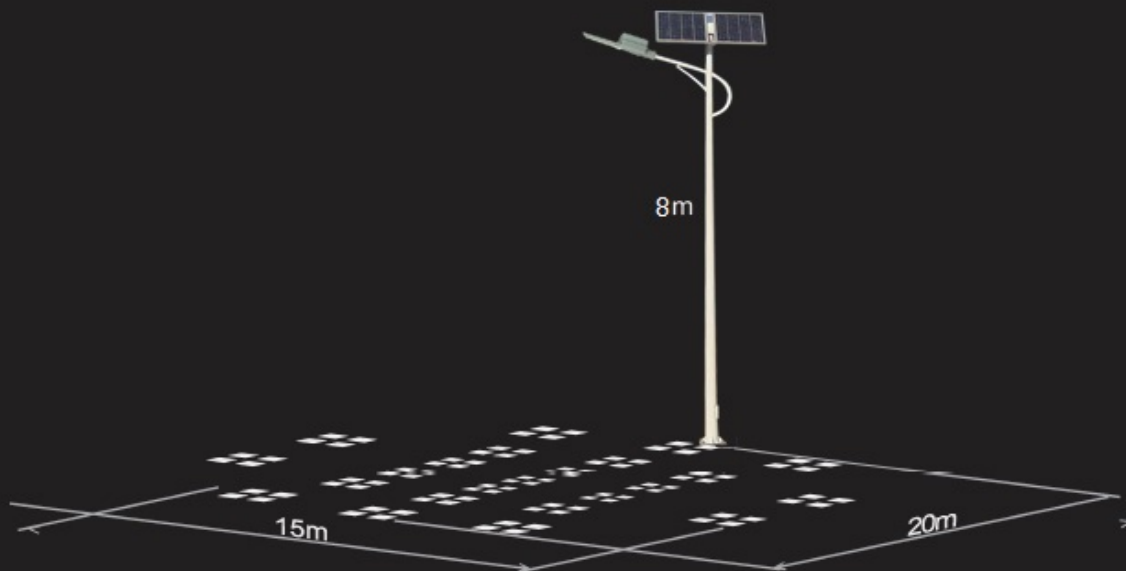


Automatic alarm technology:

Collecting the output voltage and current of solar panel, the voltage and current of battery and led modular in real time by intelligent chip, the working state of each part is detected and judged, and the fault alarm occurs automatically. Through different indicator lights, it is convenient for maintenance personnel to judge the problem intuitively and quickly.

Microwave sensor

Microwave sensors *detect* the human body motion by emitting high-frequency radio waves. When human motion is detected, the microwave sensor is triggered and the lamp becomes 100% brightness. When the human body has left the lamp, the microwave sensor closes the trigger and the lamp becomes weak light, which can extend the lighting time.



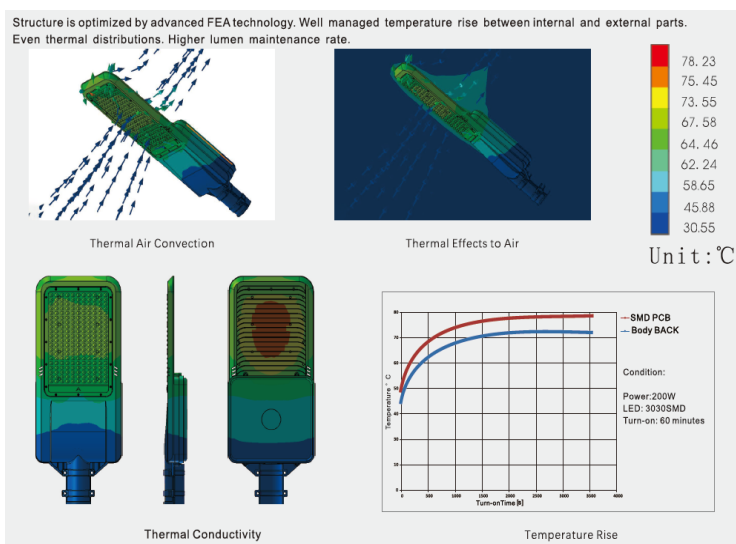
only for reference

Trismart Lighting

Thermal management

Thermal management

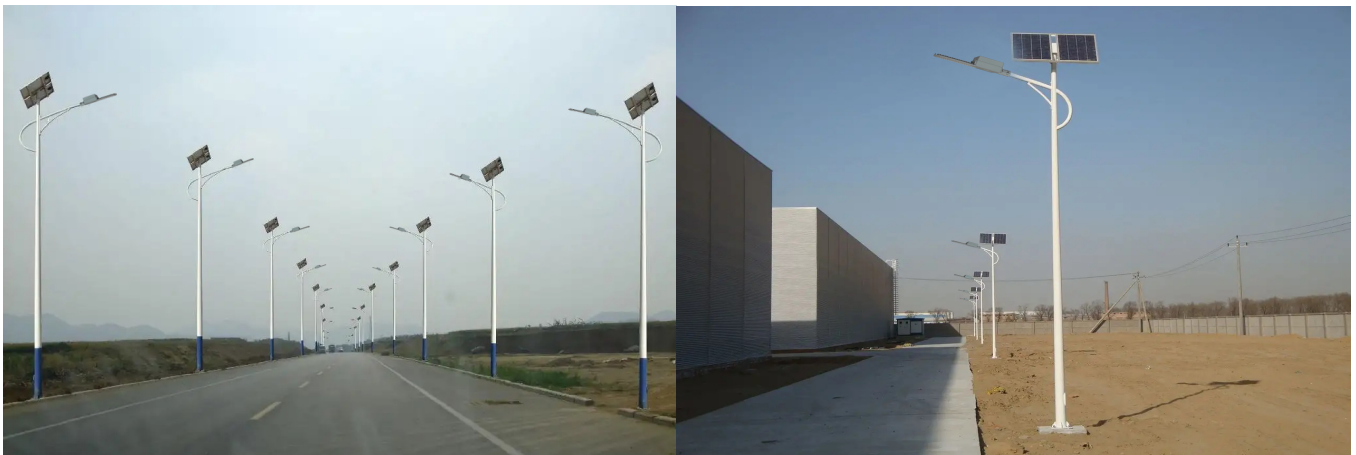
- Using high thermal conductivity aviation aluminum alloy material and formed by precision die-casting, the heat dissipation speed is fast.
- Finite element analysis technology is used to optimize the heat dissipation structure design and control temperature rise of each component of the lamp.



Technical parameters:

Parameter items	30W	50W	65W	80W	100W
Brand of led chip	Philips	Philips	Philips	Philips	Philips
Luminous efficiency for led	240 lm/W	240 lm/W	240 lm/W	240 lm/W	240 lm/W
Total luminous flux (lm)	7200±5% lm	12000±5% lm	15600±5% lm	19200±5% lm	24000±5% lm
Light efficacy for luminaire	200 lm/W	200 lm/W	200 lm/W	200 lm/W	200 lm/W
Beam angle	145°*70°	145°*70°	145°*70°	145°*70°	145°*70°
Correlated color temperature	3000-6500K	3000-6500K	3000-6500K	3000-6500K	3000-6500K
Color rendering index	≥75Ra	≥75Ra	≥75Ra	≥75Ra	≥75Ra
Led lifespan	100000 hrs	100000 hrs	100000 hrs	100000 hrs	100000 hrs
Type of battery	LiFePO ₄ battery	LiFePO ₄ battery	LiFePO ₄ battery	LiFePO ₄ battery	LiFePO ₄ battery
Capacity of battery	220Wh	400Wh	530Wh	670Wh	790Wh
Lifespan of battery	≥3000 cycle	≥3000 cycle	≥3000 cycle	≥3000 cycle	≥3000 cycle
Charging time	6-7 hrs	6-7 hrs	6-7 hrs	6-7 hrs	6-7 hrs
Continuous rainy days	2-3 days	2-3 days	2-3 days	2-3 days	2-3 days
Dark sky requirement	meet	meet	meet	meet	meet
Microwave sensor	yes	yes	yes	yes	yes
Power of mono solar panel	40W	60W	80W	100W	120W
Material of shell	die-cast aluminum	die-cast aluminum	die-cast aluminum	die-cast aluminum	die-cast aluminum
Discharging temperature	-25~+60℃	-25~+60℃	-25~+60℃	-25~+60℃	-25~+60℃
Charging temperature	-10~+55℃	-10~+55℃	-10~+55℃	-10~+55℃	-10~+55℃
IP protection	IP66	IP66	IP66	IP66	IP66
Lamp dimension	710*265*100 mm	710*265*100 mm	710*265*100 mm	710*265*100 mm	710*265*100 mm
Lamp weight	3.8 Kg	4.6 Kg	5.6 Kg	6.6 Kg	7.2 Kg
Diameter of mounting pipe	φ 60 mm	φ 60 mm	φ 60 mm	φ 60 mm	φ 60 mm
Recommended mounting height	5-6 m	6-7 m	7-8 m	8-9 m	9-10 m

Note: Please select the power of lamp according to the recommended mounting height.





Trismart Lighting

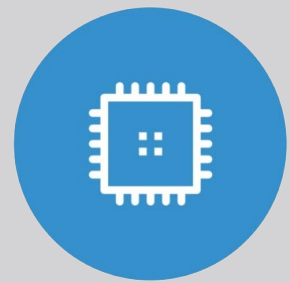
speciality builds higher quality



energy-saving



quality



intelligent

Address: 3F, No.3, behind the substation, Yulu Community, Yutang Street,
Guangming District, Shenzhen

Website: www.sztrismart.com

Email: dr.chen@sztrismart.com